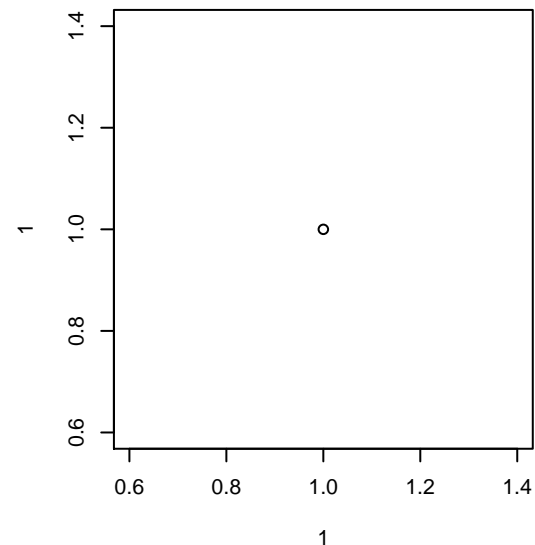


Santa Clarita Valley SC Yellow B02

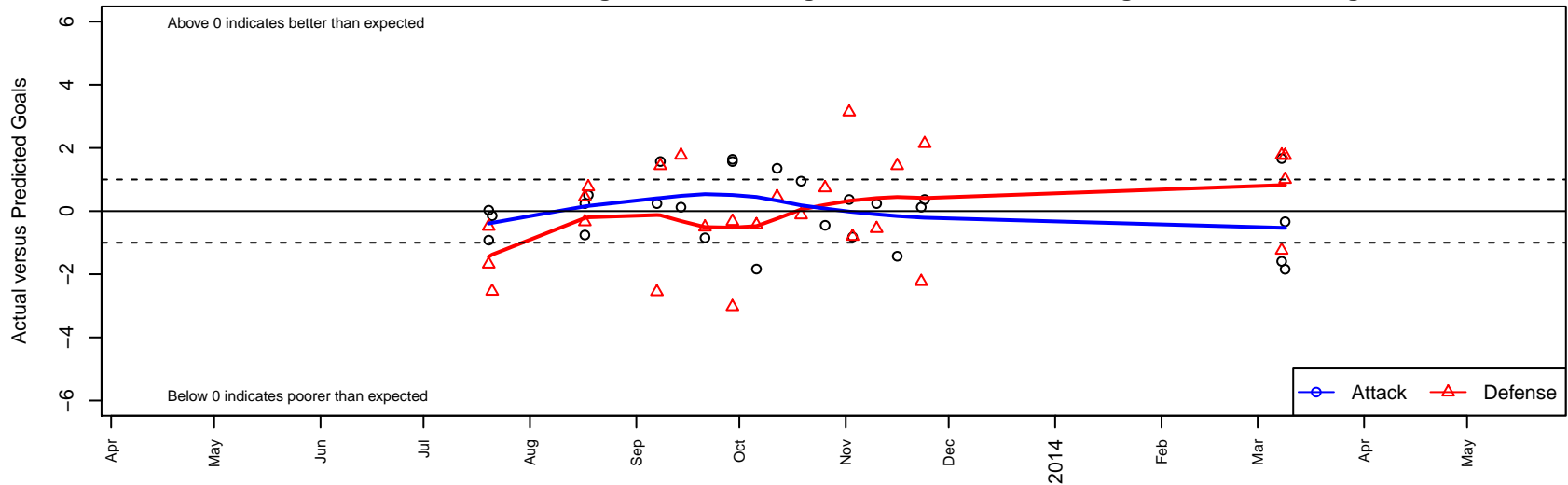
, CAS
 B02 total strength=826
 attack=1.66 defense=0.72
 fall league = SCDL FI1 U11

alt names used:
 Santa Clarita Valley Soccer Club B02 Yellow
 SANTA CLARITA VALLEY MAGIC MAGIC YEL
 SANTA CLARITA VALLEY MAGIC YELLOW (C)

Venues played:
 Pats Cup BU11 Mercurial U11
 West Coast Futbol Classic Flight 1 U11
 SCDL FI1 U11
 SoCal DL Fall Showcase Flight 1 U11
 Las Vegas Invit Gold U11



Santa Clarita Valley SC Yellow B02
 Dots are actual minus expected GF (blue circles) and GA (red triangles).
 Blue line is smoothed change in attack strength. Red is smoothed change in defense strength.



	date	home		away		venue	pred.home	pred.away
24179	2014-03-09	Heat FC EM B02	2	Santa Clarita Valley SC Yellow B02	1	Las Vegas Invit Gold U11	3.00	2.84
24181	2014-03-09	Vegas All Boys FC 03 B02	0	Santa Clarita Valley SC Yellow B02	1	Las Vegas Invit Gold U11	1.76	1.34
23830	2014-03-08	Santa Clarita Valley SC Yellow B02	3	Vegas All Boys FC 03 B02	3	Las Vegas Invit Gold U11	1.34	1.76
23832	2014-03-08	Santa Clarita Valley SC Yellow B02	1	Vegas United B02	0	Las Vegas Invit Gold U11	2.59	1.78
19303	2013-11-24	Real So Cal White B02	1	Santa Clarita Valley SC Yellow B02	1	SCDL FI1 U11	3.14	0.63
19074	2013-11-23	LA Galaxy South Bay Gold B02	5	Santa Clarita Valley SC Yellow B02	1	SCDL FI1 U11	2.77	0.88
18396	2013-11-16	Santa Clarita Valley SC Yellow B02	3	CZ Elite Zein B02	0	SCDL FI1 U11	4.43	1.44
18022	2013-11-10	Santa Clarita Valley SC Yellow B02	2	Arsenal FC B02	3	SCDL FI1 U11	1.76	2.45
17172	2013-11-03	Santa Clarita Valley SC Yellow B02	2	FRAM Premier B02	3	SCDL FI1 U11	2.82	2.20
16643	2013-11-02	Santa Clarita Valley SC Yellow B02	1	Real So Cal White B02	0	SCDL FI1 U11	0.63	3.14
15763	2013-10-26	FC Los Angeles Black B02	1	Santa Clarita Valley SC Yellow B02	2	SCDL FI1 U11	1.73	2.45
14820	2013-10-19	Beach FC South Bay Black B02	2	Santa Clarita Valley SC Yellow B02	3	SCDL FI1 U11	1.88	2.05
13771	2013-10-12	Santa Clarita Valley SC Yellow B02	10	FC Golden State White B02	0	SCDL FI1 U11	8.65	0.46
13227	2013-10-06	Santa Clarita Valley SC Yellow B02	0	Santa Barbara SC White B02	3	SCDL FI1 U11	1.84	2.57
12277	2013-09-29	Santa Clarita Valley SC Yellow B02	3	Manchester Academy Elite B02	3	SoCal DL Fall Showcase Flight 1 U11	1.43	2.67
12289	2013-09-29	Santa Clarita Valley SC Yellow B02	3	Laguna United Blue B02	6	SoCal DL Fall Showcase Flight 1 U11	1.36	2.97
10851	2013-09-21	Exiles SC Black B02	3	Santa Clarita Valley SC Yellow B02	1	SCDL FI1 U11	2.49	1.85
9882	2013-09-14	Santa Clarita Valley SC Yellow B02	1	LA Galaxy South Bay Gold B02	1	SCDL FI1 U11	0.88	2.77
9432	2013-09-08	CZ Elite Zein B02	0	Santa Clarita Valley SC Yellow B02	6	SCDL FI1 U11	1.44	4.43
8941	2013-09-07	Arsenal FC B02	5	Santa Clarita Valley SC Yellow B02	2	SCDL FI1 U11	2.45	1.76
7389	2013-08-18	West Coast FC B02	3	Santa Clarita Valley SC Yellow B02	2	West Coast Futbol Classic Flight 1 U11	3.77	1.49
6996	2013-08-17	Santa Clarita Valley SC Yellow B02	2	LA Premier B02	4	West Coast Futbol Classic Flight 1 U11	2.76	3.66
6998	2013-08-17	Santa Clarita Valley SC Yellow B02	2	Arsenal FC B02	2	West Coast Futbol Classic Flight 1 U11	1.76	2.45
4152	2013-07-21	Santa Clarita Valley SC Yellow B02	1	Rebels B02	5	Pats Cup BU11 Mercurial U11	1.15	2.46
3669	2013-07-20	Strikers FC Irvine B02	6	Santa Clarita Valley SC Yellow B02	0	Pats Cup BU11 Mercurial U11	4.32	0.92
3670	2013-07-20	Pateadores MV B02	3	Santa Clarita Valley SC Yellow B02	2	Pats Cup BU11 Mercurial U11	2.52	1.97